

## Slip-Joint Nut with Washer


**Description:**

1-1/2" x 1-1/4" Slip Joint Nut with Washer is designed for use in tubular drain applications. The slip joint nut includes a washer for a leak resistant connection. The slip joint nut makes connecting tubular drains easy and quick to install.

**Construction:**

Chrome-plated brass nut with washer

**Package:**

Bag

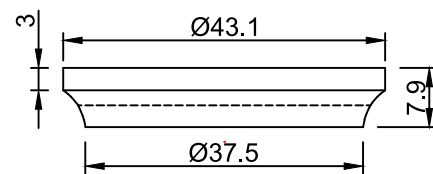
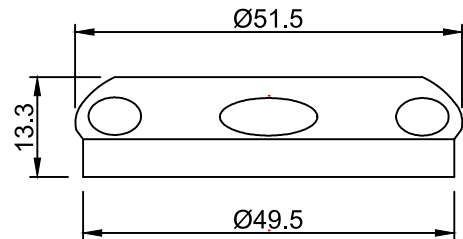
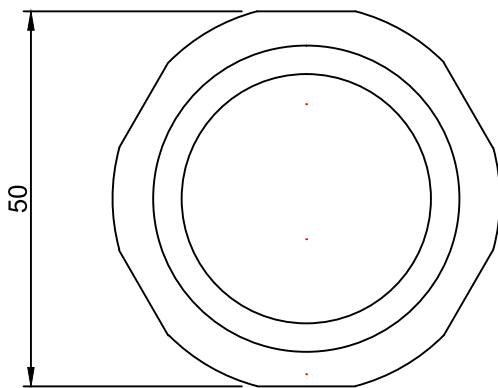
**Code Approvals:**

Part #	Description	Inn/Mas
35053	1-1/2" x 1-1/4"	10/250

Country of origin: China

### Rough in Drawing

All Dimensions Shown Are Nominal



Measurements in mm