

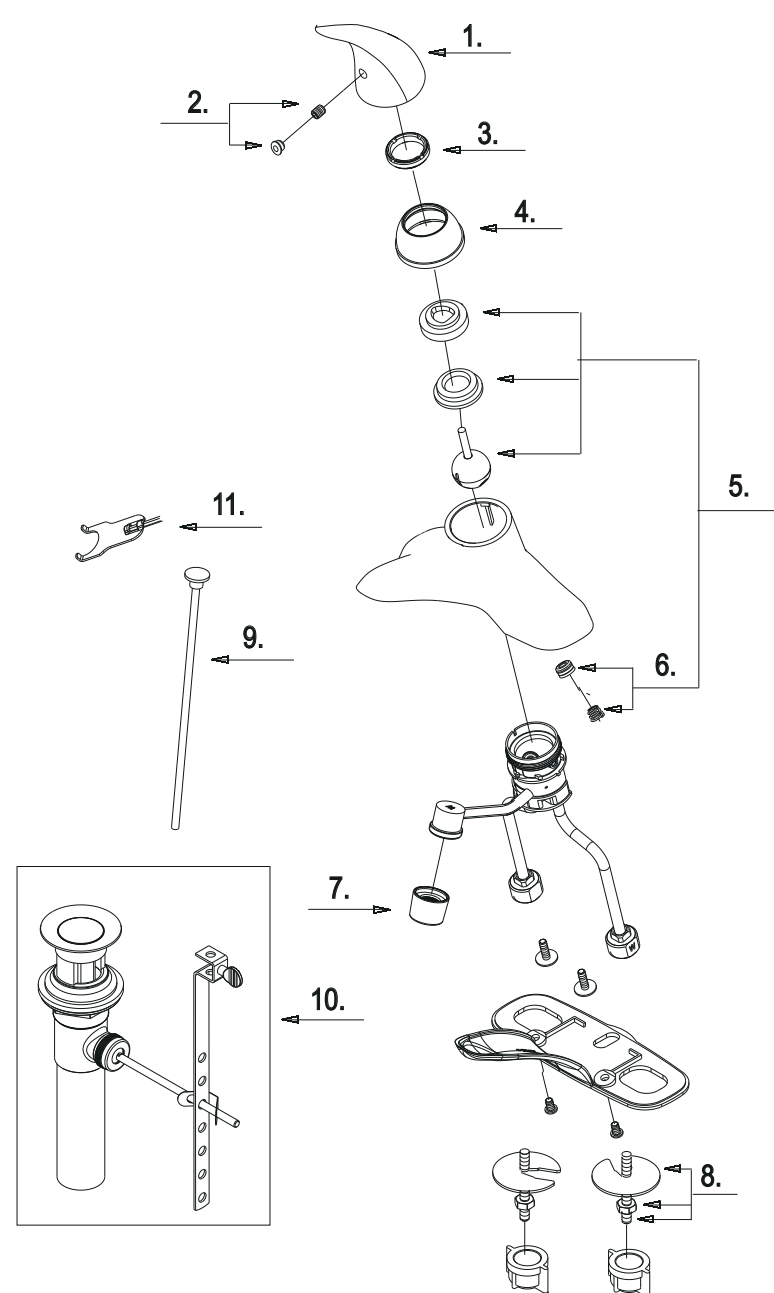
Troubleshooting Guide

Minor problems often can be fixed without a plumber. Before doing any work on the faucet, shut off water supply and close stopper or drain to avoid losing small parts.

Problem	Cause	Solution
Leak from spout	Damaged or dirty seals	Disassemble faucet, remove cartridge. Clean or replace cartridge if necessary. Reassemble.
Leak from under handle	Damaged cartridge	Remove handle. Replace cartridge.
Uneven water spray	Clogged aerator	Remove aerator. Clean or replace aerator if necessary.
Leak from around aerator	Bad aerator seal	Remove aerator. Check to see that seal is flat and undamaged. Replace aerator if necessary.
Water drains slowly or not at all	Clogged drain	Remove stopper. Remove visible debris. If still clogged, remove and clean trap. Reassemble.

Replacement Parts

Keep this manual for ordering replacement parts.



- 1 Metal handle
- 2 Index Button-Cold/Hot
- 3 Locking Nut
- 4 Trim Cap
- 5 Ball Valve Assembly
- 6 Seat & Spring Set *2
- 7 Aerator
- 8 Mounting Hardware
- 9 Lift Rod
- 10 Pop-up Assembly
- 11 Wrench



10093LF
10094LF
Chrome Finish

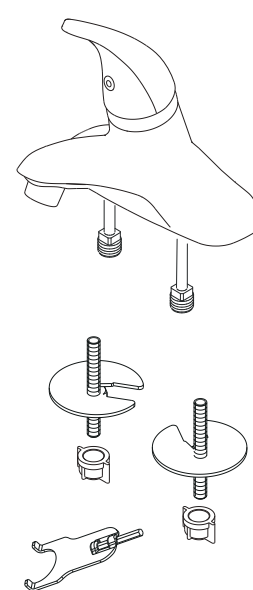
Single Control Bathroom Faucet

With Pop-Up



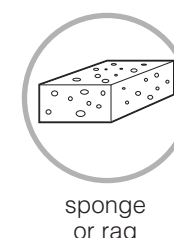
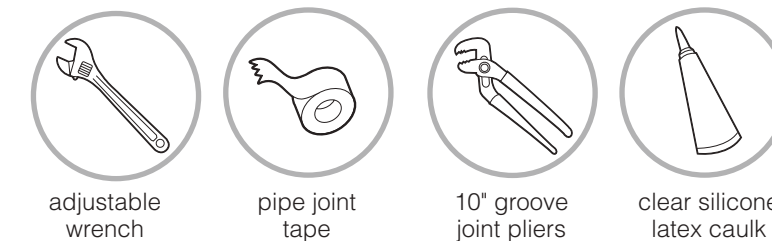
Before You Begin

Check to make sure you have the following:

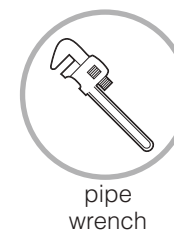
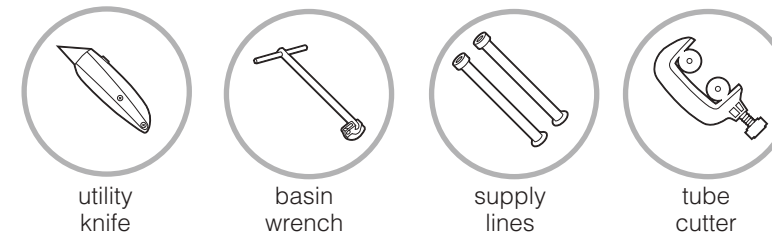


Tools and Supplies

You will need the following to install your new faucet:

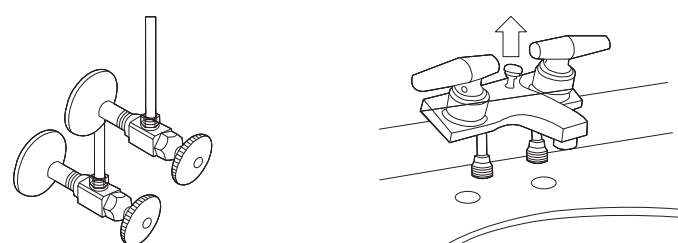


Tools and supplies that will help simplify the installation of your new faucet:



Removing Your Old Faucet

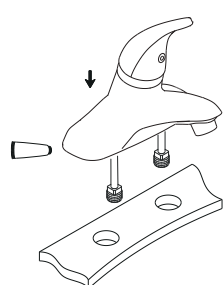
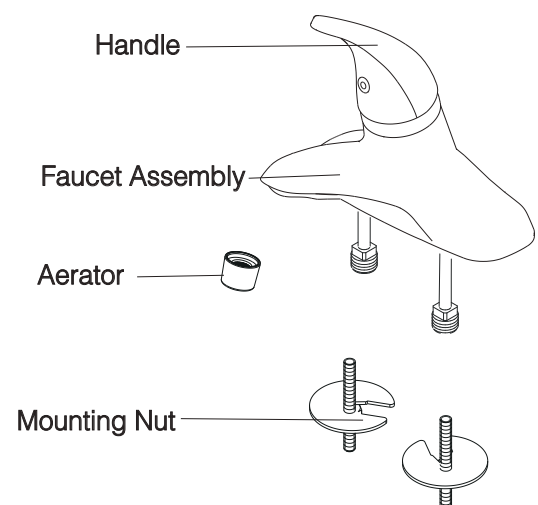
Before doing any work on the faucet, shut off water supply and close drain to avoid losing small parts.



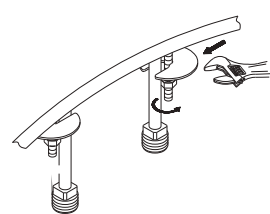
1 Shut off hot and cold water supply to faucet or turn off main water supply.

2 Remove old faucet. Clean sink surface.

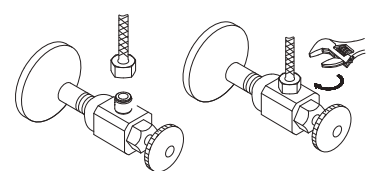
Faucet Installation



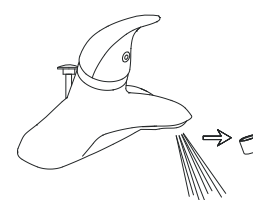
1 Position faucet. Apply clear silicone latex caulk to base plate.



2 Slide large washer onto threaded rods and make sure open slots are around copper tubes. Line up faucet with edge of sink. Tighten nuts.



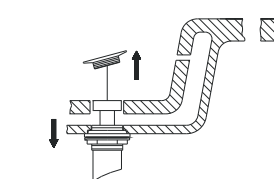
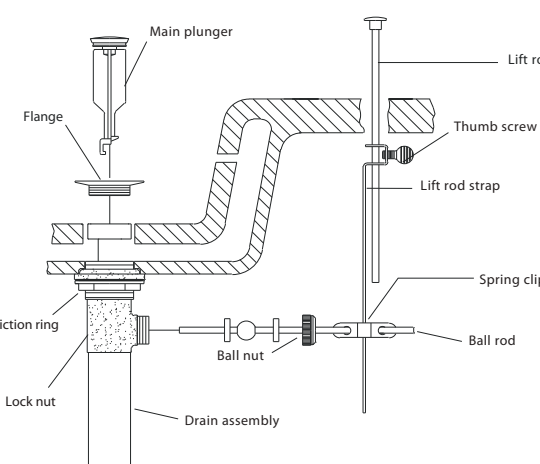
3 Apply pipe tape onto threads of the water supply. Tighten the hose onto water supply.



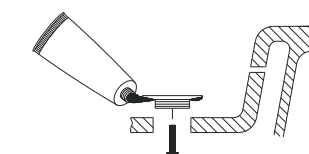
4 After installing faucet, remove aerator and turn on water to remove any left over debris. Re-assemble aerator and tighten.

Pop-Up Drain Installation

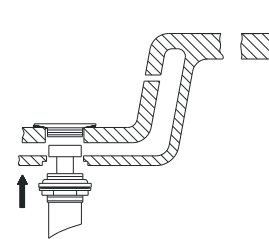
Warning: Avoid contact of plastic parts with plumber's putty, pipe dope, or any other oil based compound.



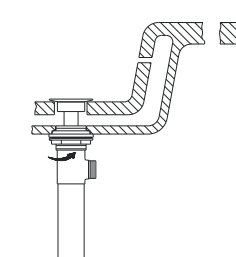
1 Remove old drain assembly and pop-up.



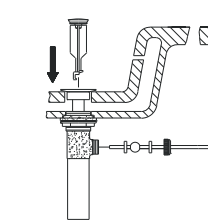
2 Apply clear silicone latex caulk under rim of flange.



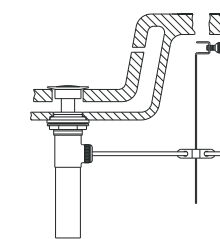
3 Insert threaded end of drain body up through drain hole and attach flange to body.



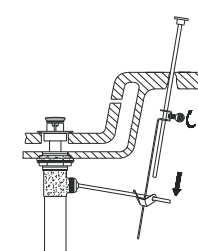
4 Thread lock nut from underside of sink until rubber washer sits securely inside opening of sink. Tighten lock nut.



5 Insert main plunger into drain. Insert ball rod into rod port and into hole at bottom of main plunger.



6 Place one end of spring clip on end of ball rod. Pass the tip of the rod through the hole in the lift rod strap and then through the hole on the other end of the spring clip.



7 Insert bottom of lift rod into hole at top of lift rod strap. Tighten with thumb screw.